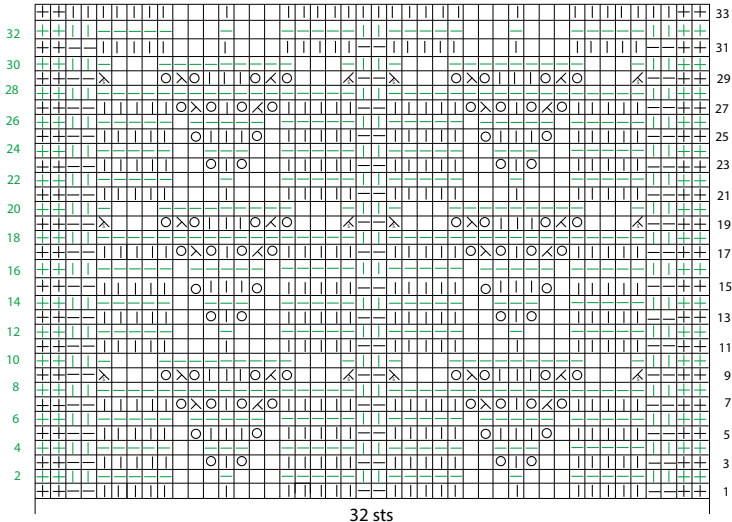


BELL OPENWORK MOTIF



32 sts

⊕ = selvedge st (= K1)

▮ = K1 ▨ = P1 ◯ = yfd (yarn forward) ⋈ = K2tog ⋈ = SK1P

⋈ = SK5P ⋈ = K5tog □ = no stitch

Rows in black correspond to the right side of the work,
rows in green correspond to the wrong side of the work.

Each square corresponds to 1 stitch and 1 row.