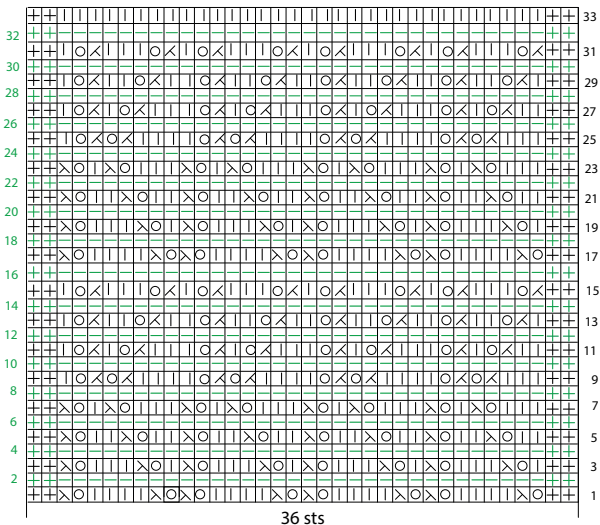


ZIG ZAG OPENWORK MOTIF



⊕ = selvedge st (= K1)

1 = K1 P = P1 ⊙ = yfd (yarn forward) ⊗ = K2tog ⊠ = SK1P

Rows in black correspond to the right side of the work,
rows in green correspond to the wrong side of the work.

Each square corresponds to 1 stitch and 1 row.

Note: motif shown in photo has only 1 selvedge st.