



**Size:** UK 10 - US 6 - EU 36  
oversize. **Skill Level:** advanced

**How much yarn:** 9 balls (each ball 50 g and 125m) of **Super Soft** yarn (100% Extrafine Merino Wool) whose 8 balls shade no. 14569 green and 2 balls shade no. 978 cream

**Needles:** A 4.00mm circular needle with 40cm cable. A 4.00mm circular needle with 100cm cable

A 4.00mm double pointed (Dp) cable needle

**Sewing needle:** Yarn needle with rounded point

**Other items:** Red, yellow and green stitch-markers

## STITCHES

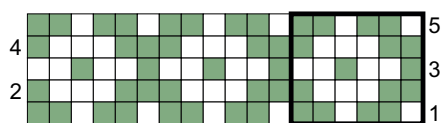
**Using needles:** K2, P2 rib - STOCKING STITCH (ST ST): 1 row K (RS), 1 row P (WS). CIRCULAR STOCKING STITCH: all rounds K. FAIR ISLE STOCKING STITCH: work in stocking stitch, following Chart and Key. Use a ball for each colour, twisting yarn on WS to avoid holes when changing colours. CIRCULAR CABLE STITCH: (work over a multiple of 12 sts)

**Round 1:** \* P2, K4; rep from \* to end. **Rounds 2 and 3:** K all sts K and purl all sts P. **Round 4:** \* P2, 4 Left Crossed sts (slip next 2 sts onto Dp needle, on frontside, K2, K2 from Dp needle), P2, 4 Right Crossed sts (slip next 2 sts onto Dp needle, on backside, K2, K2 from Dp needle); rep from \* to end. Rep these 4 Rounds throughout.

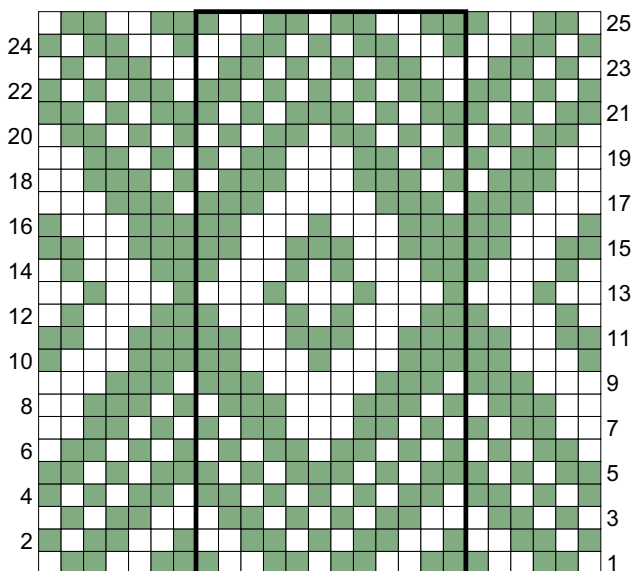
**MAKE 1 STITCH (M1):** pick up horizontal yarn between last st and next st and knit into the back of it (1 st increased).

**WRAP AND TURN (W&T) SHORT ROWS:** at end of a row, before turning, work until last st remains on left needle, then work a W&T st either on the knit side or on the purl side. **On the knit side:** with the yarn in front, insert your needle purlwise into the stitch you are going to wrap (in this case, that's the last st of the row); slip the st from left needle to right needle, pull the yarn around to the back of the work. Slip the stitch back onto the left needle again. There is a little bar (= wrap yarn) at stitch base. Turn work to the wrong side, preparing to work the purl row. Before you start to purl across on the wrong side, tug on the yarn to make sure the wrap around the stitch is snug (but don't pull too tightly, or you'll have a difficult time picking up wrap). Insert right needle under wrap yarn from front to back and place it on left needle, behind the W&T st, passing it over the stitch to hide it as much as possible on RS of the work, then Knit wrap yarn and W&T st together, avoiding holes. **On the purl side:** with the yarn in back, insert your needle purlwise into the stitch you are going to wrap (in this case, that's the last st of the row); slip the st from left needle to right needle, pull the yarn around to the front of the work. Slip the stitch back onto the left needle again. There is a little bar (= wrap yarn) at stitch base. Turn work. Next row: insert right needle under wrap yarn from back to front and place it on left needle, behind the W&T st, passing it over the stitch to hide it as much as possible on RS of the

## YOKE DIAGRAM



## LOWER BORDER DIAGRAM



## KEY

□ = n. 978    ■ = n. 14569

Each square corresponds to 1 stitch and 1 round.

The black box on the diagram shows the Fair Isle pattern to be repeated.

work, then Purl wrap yarn and W&T st together, avoiding holes.

## TENSION

21 sts and 28 rounds measure 10cm square over circular stocking stitch with 4.00 mm needles. Take time to check tension before starting work: it is essential to work to the stated tension to achieve success.

## INSTRUCTIONS

**Note:** work jumper in one piece, starting from neck and working "top-down". **Neck:** Using 4.00mm circular needle with 40cm cable and green yarn shade no. 14569 cast on 109 sts and, making sure that sts aren't twisted, join to work in the round as follows: slip 1st stitch from right needle to left needle, then pass last st over slipped st: 108 sts remain. Place yellow stitch-marker on right-hand needle before this stitch to indicate round beg at Back center. For **neck border** work 12 rounds K2, P2 rib (corresponding to 4cm). **Yoke:** Cont to work with W&T short rows to shape piece, placing stitch-markers as follows: from yellow stitch-marker (that shows round beg) count 26 sts towards right direction (in the opposite direction to that of working), place a green stitch-marker (= SM), (count 4 sts and place a green SM) twice. Now count from yellow SM but towards left direction, place a red SM after 26 sts, (count 4 sts and place a red SM) twice. Cont to work st st as follows: 1 wrap st, turn. **1st row (WS):** work until to 1st green SM, remove SM, 1 wrap st, turn. **2nd row (WS):** work until to 1st red SM, remove red SM, 1 wrap st, turn.

**3rd row (WS):** work until to 2nd green SM, remove SM, 1 wrap st, turn. **4th row (WS):** work until to 2nd red SM, remove red SM, 1 wrap st, turn. **5th row (WS):** work until to 3rd green SM, remove SM, 1 wrap st, turn. **6th row (WS):** work until to 3rd red SM, working M1 at either side of both P2 raglans, remove red SM, 1 wrap st, turn. **7th row (WS):** work until to yellow SM (that indicates beg and end of every round), remove SM, 1 wrap st, turn. Cont to work all sts in circular stocking st, increasing sts and working Fair Isle Motif as follows (the numbering of the rounds is calculated from the 1st after K2, P2 neck rib border). **8th round:** work in circular st st, without incs. **9th round (with incs):** work \* K5, M1, K4, M1; rep from \* to end. There are 132 sts. **10th and 11th rounds:** work in circular st st, without incs. From **12th to 16th round:** work Fair Isle Motif in circular st st, following Yoke diagram, then continue with green colour only. **Note:** when the number of stitches makes it necessary, take the circular needle with 100cm cable. **17th, 18th and 19th rounds:** work in circular st st, without incs. **20th round (with incs):** \* K3, M1; rep from \* to end. There are 176 sts. From **21st to 31st round:** work in circular st st, without incs. **32nd round (with incs):** \* K4, M1; rep from \* to end. There are 220 sts. From **33rd to 41st round:** work in circular st st, without incs. **42nd round (with incs):** work \* K6, M1, K5, M1; rep from \* to end. There are 260 sts. From **43rd to 51st round:** work in circular st st, without incs. **52nd round (with incs):** work \* K6, M1, (K5, M1) twice; rep from \* ending with K4. There are 308 sts. Cont to work in circular st st. When 68 rounds (corresponding to 24cm) have been worked from rib border (measured and counted from Back center) divide work, continuing only on Body sts and leaving unworked the sts of each Sleeve, as follows: work 98 sts for Front, cast on 4 new sts for armhole, leave unworked next 56 sts for First Sleeve, work 98 sts for Back, cast on 4 new sts for other armhole, leave unworked next 56 sts for Second Sleeve. There are 204 sts for Body (Back and Front). Join work in round.

**Back and Front:** work the 204 sts in circular stocking st. When 36 rounds (corresponding to 13cm) have been worked from Back&Front beg, work 17 rounds in Circular cable stitch, 2 rounds in circular st st and 25 rounds following diagram for Lower Border (= 28cm from Back-Front beg). At end of diagram, work 13 rounds in K2, P2 rib, corresponding to 4.5cm. Then cast off all sts loosely in rib. **Sleeves:** (make 2) Using 4.00mm circular needle with 40cm cable pick up 4 sts from 4 cast-on sts for armhole of Back and Front and cont to work on 56 sts left unworked: there are 60 sts. Work in circular stocking st. When 56 rounds have been worked, corresponding to 20cm from Sleeve beg, work 17 rounds in Circular cable stitch, 2 rounds in circular st st and 25 rounds following diagram for Lower Border and 2 rounds in circular st st decreasing 12 sts evenly across last round (= 37cm from Sleeve beg). Then, for Cuff, work 15 rounds K2, P2 rib (corresponding to 5.5cm). Cast off loosely in rib. **Note:** wash garment carefully at low temperatures, with a very little fabric softener. Lay the garment to dry on a flat surface, without ever hanging it.

