



Size: to fit small dogs - **Skill Level:** intermediate

How much yarn: 2 balls (each ball 50g and 125m) of **Super Soft** yarn (100% Extrafine Merino Wool) shade no. 22035

Needles: A 3.75mm knitting needles
A double-pointed (Dp) needle

Sewing needle: Yarn needle with rounded point

Other items: A stitch-holder. A metal ring

STITCHES

Using needles: K2, P2 rib - P1, K3 rib - K3, P1 rib

2-st LC (= 2 Left Crossed Stitches): knit 2nd st on left needle on backside of 1st st, keep it on the needle, knit 1st st and slip both sts off the left needle).

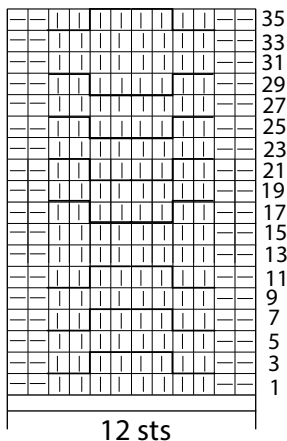
2-st RC (= 2 Right Crossed Stitches): knit 2nd st on left needle on frontside of 1st st, keep it on the needle, knit 1st st and slip both sts off the left needle).

CABLE PATTERN: work on 12 sts, following diagram and key.

4 Left Crossed stitches (4-st LC): slip next 2 sts to Dp needle and hold to front, K next 2 sts, K2 from Dp needle).

4 Right Crossed stitches (4-st RC): slip next 2 sts to Dp needle and hold to back, K next 2 sts, K2 from Dp needle).

CABLE PATTERN



12 sts

KEY | = K1 — = P1

⌋⌋⌋⌋ = 4 Left Crossed stitches (4-st LC)

⌋⌋⌋⌋ = 4 Right Crossed stitches (4-st RC)

On even rows work stitches as they appear

Each square corresponds to 1 st and 1 row

TENSIONS

22 sts and 28 rows measure 10cm square over rib with 3.75 mm needles. Central motif with cable pattern is 8cm large. Take time to check tensions before starting work: it is essential to work to the stated tensions to achieve success.

INSTRUCTIONS

Work dog coat starting from neck. Cast on 54 sts and work 26 rows in K2 P2 rib, then inc 13 sts evenly on next row. There are 67 sts on needle and work measures 9 cm from beg. Cont to work as follows. 12 sts in P1, K3 rib; (P2, 2-st LC) twice, 12 sts on cable patt, (2-st RC, P2) twice, 12 sts in K3, P1 rib, 15 sts in K2, P2 rib starting with P2 and ending with P3. When work measures 7cm from neck, leave last 15 sts on a stitch-holder and cont to work on rem 52 sts until work measures 20 cm from neck. To round upper part of the Back, cast off at each end on next and every alternate row: 3 sts once, 2 sts once, 1 st 8 times and 2 sts once, then cast off rem 22 sts. Now work the 15 sts from stitch-holder until piece measures 20cm from neck (i.e. the same height as the Back before the decreases), in order to have the girth, then cast off.

FINISHING

For the first paw, pick up 16 sts along a girth side and a back side (= 32 sts), making sure that the closing seam matches the side that is still open. Work 8 rows in K2, P2 rib, then cast off. Sew the leg and girth side together with the back side still open. Pick up 66 sts across the back and the girth to create finishing border and work 6 rows in K2, P2, then cast off. Work the second paw as the first paw, then complete the side seam, including border. Insert the ring between the stitches to attach the leash.

Note: wash item carefully at low temperature, with a very little fabric softener. Lay the item to dry on a flat surface, without ever hanging them.

